



UNDER CONTROL

Suppliers of Heating Elements and
Temperature Control Solutions

INFRARED LAMPS



undercontrol.co.uk

INFRARED LAMPS

Infrared lamps are used in a variety of applications from process drying and curing lines to food warming in catering or outdoor heating. Here at Under Control, we stock a range of items for all of your infrared replacement needs. With sizes ranging from 78 mm to 788 mm, you will find the right style for your business, making them perfect for saunas, outdoor eating areas, churches, mosques, and large warehouse spaces.

The uses of infrared heating in catering and food service

There are many different uses for infrared lamps, especially within the catering and food service industries. However, their use isn't simply limited to these areas. Infrared heat lamps can be used in catering companies to keep food warm, or outside of pubs, bars, and restaurants to keep patrons from feeling the cold in the winter. This is an effective and relatively low-cost heating medium, with prices starting under £4.

Process IR Heating and Commercial IR Space Heating

The iconic ruby infrared lamp is the most easily recognised. Reducing glare to the eyes, they are widely used in industrial, commercial, and domestic applications. Commonly found in Clarke Devil and Rhino TQ3 heaters, they are available in a variety of lengths to suit your business needs.

Lamp holders and fitting

For organisations in need of infrared lamp holders, we stock a range to help your business. Designed to extend the infrared lamp's life, they will keep the lamp working for as long as possible under the high temperatures that they operate with. Prices start from just over £4 so you can get the best products at a fraction of the price. We also offer a price guarantee and will match any like-for-like quote.

Are infrared heat lamps energy efficient?

Yes, infrared lamps are energy efficient.

IR lamps convert circa 92% of the absorbed electricity into heat radiation. This means they are far more efficient than standard halogen lamps. An infrared lamp takes 1 to 3 seconds to achieve the desired temperature. This is feasible because heat dispersion is controlled by radiation, which has a wavelength of 0.78 μm to 10.0 μm depending on the type of lamp used.

Besides that, the IR lamp has a lifespan of roughly 5000 hours at the nominal voltage specified by the manufacturer.



Ruby Infrared lamps 348-R7S



Ruby Infrared lamps 348-R7S

Ruby infrared lamps 348mm R7S, universal burning, 348mm OAL, 280mm heated R7S. Replacement Rhino TQ3 and Clarke Devil 355SP/370SP/370P/370SPB/370PB/370SPC/371SP

WATTAGE **1100w** **1400w** **1500w** **2000w**

Ruby slim infrared lamps reduce the glare to the eyes, available in a range of lengths from 78 – 788mm, wattages and voltages to suit your needs. Manufactured from doped quartz only 10mm, because they convert virtually all the electrical power into heat, hardly any energy is wasted. They can be switched on/off and the heat output is instant. These lamps are used in industrial, commercial as well as domestic applications. They are widely used in the Clarke Devil and Rhino TQ3 heaters.

LENGTH	WATTAGE	VOLTAGE	END TYPE	PART NO.
348mm	1100W	230V	R7S	RIR-1.1KW-348-R7S
348mm	1100W	110V	R7S	RIR-1.1KW-110-348-R7S
348mm	1400W	230V	R7S	RIR-1.4KW-348-R7S-7960186
348mm	1400W	110V	R7S	RIR-1.4KW-110-348-R7S-7960151
348mm	1500W	230V	R7S	RIR-1.5KW-348-R7S-7960158
348mm	1500W	110V	R7S	RIR-1.5KW-110-348-R7S-7960148
348mm	2000W	230V	R7S	RIR-2KW-348-R7S

Ruby Infrared Lamps 118-R7S



Ruby Infrared Lamps 118-R7S

Infrared ruby lamp, universal burning, 118mm OAL, 60mm heated R7S 240v

WATTAGE **300w** **400w** **500w**

Ruby Infrared Lamps 118-R7S are replacement lamps for parasol heaters such as the heatmaster U3, available on 300w, 400w, 450w and 500w versions. The ruby tube design reduces the glare of the halogen light and so is better for the eyes. Infrared ruby lamps can be mounted vertically or horizontally, available wattages are 300w. The overall length is 118mm with a 60mm heated section and R7S ends. The voltage is 240v and has a long-lasting life of 5000hrs.

Ruby slim infrared lamps are available in a wide range of lengths from 78 – 788mm. Several wattage's and voltages to suit your needs. Manufactured from doped quartz only 10mm, because they convert virtually all the electrical power into heat hardly any energy is wasted.

They can be switched on/off, the heat output is instant.

LENGTH	WATTAGE	VOLTAGE	END TYPE	PART NO.
118mm	300W	230V	R7S	RIR-300W-118-R7S-7960117
118mm	400W	230V	R7S	RIR-400W-118-R7S-7960114
118mm	500W	230V	R7S	RIR-500W-118-R7S-7960126

Ruby Slim Infrared Lamps 254-R7S



Ruby Slim Infrared Lamps 254-R7S

Infrared ruby lamp, universal burning, 254mm OAL, 195mm heated R7S 240v

WATTAGE **1000w** **1200w** **1300w**

Ruby Slim Infrared Lamps 254-R7S has an overall length 254mm, ruby tube, short wave, 8mm dia with ceramic r7s ends. short wave. These patio heater lamps are replacements spares for patio heaters. Energy-efficient with low running costs compared to gas.

Ruby slim infrared lamps reduce the glare to the eyes, available in a range of lengths from 78 – 788mm, wattage's and voltages to suit your needs. Manufactured from doped quartz only 10mm, because they convert virtually all the electrical power into heat hardly any energy is wasted. They can be switched on/off and the heat output is instant.

LENTH	WATTAGE	VOLTAGE	END TYPE	PART NO.
254mm	1000W	230V	R7S	RIR-1KW-254-R7S-7960136
254mm	1200W	230V	R7S	RIR-1.2KW-254-R7S
254mm	1300W	230V	R7S	RIR-1.3KW-254-R7S-7960139

Ruby Infrared lamps 350-SK15



Ruby Infrared lamps 350-SK15

Infrared ruby lamp, universal burning, 350mm OAL, 280mm heated SK15 500mm leads 120/240v

WATTAGE **1000w** **1500w** **2000w**

Infrared ruby lamp, universal burning, 350mm OAL, 280mm heated SK15 500mm leads 240v

Replacements for:-
Tansun Sorrento 2 kW Heater

LENGTH	WATTAGE	VOLTAGE	END TYPE	PART NO.
350mm	1000W	230V	SK15	RIR-1KW-350-SK15-7960176
350mm	1000W	110V	SK15	RIR-1KW-110-350-R7S
350mm	1500W	230V	SK15	RIR-1.5KW-350-SK15-7960160
350mm	1500W	110V	SK15	RIR-1.5KW-110-350-SK15-7960189
350mm	2000W	230V	SK15	RIR-2KW-350-SK15

Ruby Infrared Lamp 530-SK15



Ruby Infrared Lamp 530-SK15

Ruby Infrared Lamp 1000W 530-SK15, universal burning 1000w 530mm OAL, 460mm heated SK15, 500mm leads 240v

WATTAGE **1000w** **1500w**

Ruby Infrared Lamp 1000W 530-SK15, universal burning: 1000w 530mm OAL, 460mm heated SK15, 500mm leads 240v

LENGTH	WATTAGE	VOLTAGE	END TYPE	PART NO.
530mm	1000W	230V	SK15	RIR-1KW-530-SK15
530mm	1500W	230V	SK15	RIR-1.5KW-530-SK15

Ruby Infrared Lamp 788-SK15



Ruby Infrared Lamp 788-SK15

Ruby lamp, 1500w 788mm OAL, 725mm heated SK15

WATTAGE 1500w

The Ruby Infrared Lamp 788-SK15 are the longest in the range and are available from stock in 1.5kw. They are the same design as the other ruby infrared lamps we offer. They are commonly used in the automotive industry as well as infrared drying applications.

LENGTH	WATTAGE	VOLTAGE	END TYPE	PART NO.
788mm	1500W	230V	SK15	RIR-1.5KW-788-SK15

Gold Infrared Lamp 118-R7S



Gold Infrared Lamp 118-R7S

Infrared gold lamp, universal burning, 240v, 118mm OAL, 60mm heated R7S

WATTAGE **400w** **450w** **500w**

The gold Infrared Lamp 118 also reduces the brightness glare to the eyes to an even higher extent than the ruby version. We stock standard wattages of 400w, 450w and 500. Available in a range of lengths from 78 – 550mm, wattage's and voltages to suit your needs. These heat lamps are chosen when a more discrete light is required in public areas. Replacement lamps for units such as the Heatmater.

LENGTH	WATTAGE	VOLTAGE	END TYPE	PART NO.
118mm	400W	230V	R7S	GIR-400W-118-R7S
118mm	450W	230V	R7S	GIR-450W-118-R7S
118mm	500W	230V	R7S	GIR-500W-118-R7S-7960221

Gold Infrared Lamps 350-SK15



Gold Infrared Lamps-350-SK15

Infrared gold lamp, universal burning, 350mm OAL, 280mm heated SK15 500mm leads 240v

WATTAGE **1000w** **1200w** **1300w** **1400w** **1500w**
2000w

Gold infrared lamps, 350mm long, SK15 ends, 5000hr working life. Gold colour reduces the glare and light that would usually be emitted by a clear lamp and the red light that occurs using the ruby design. They are used in patio and outdoor space heating, as they are infrared they will heat surfaces rather than the air.

LENGTH	WATTAGE	VOLTAGE	END TYPE	PART NO.
350mm	1000W	110V	SK15	GIR-1KW-110-350-SK15-7960243
350mm	1000W	230V	SK15	GIR-1KW-350-SK15-7960280
350mm	1200W	230V	SK15	GIR-1.2KW-350-SK15-7960268
350mm	1300W	230V	SK15	GIR-1.3KW-350-SK15-7960265
350mm	1400W	230V	SK15	GIR-1.4KW-350-SK15
350mm	1500W	230V	SK15	GIR-1.5KW-350-SK15-7960227
350mm	2000W	110V	SK15	GIR-1.5KW-350-SK15-7960227

Gold Infrared Lamps 254-R7S



Gold Infrared Lamps 254-R7S

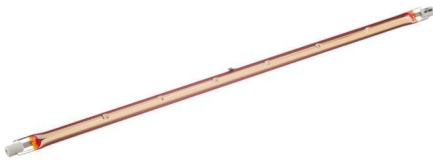
Gold infrared lamp, universal burning, 254mm OAL, 195mm heated R7S 240v

WATTAGE **1200w** **1300w**

Gold infrared lamps, 254mm long, R7S ends, 5000hr working life. Gold colour reduces the glare and light that would normally be emitted by a clear lamp and the red light that occurs using the ruby design.

LENGTH	WATTAGE	VOLTAGE	END TYPE	PART NO.
254mm	1200W	230V	R7S	GIR-1.2KW-254-R7S-7960255
254mm	1300W	230V	R7S	GIR-1.3KW-254-R7S-7960237

Gold Infrared Lamp 348-R7S



Gold Infrared Lamp 348-R7S

Gold Infrared Lamp 1.5kw-348-R7S, universal burning, 1500w 348mm OAL, 280mm heated R7S 240v

WATTAGE **1500w**

Gold-coated infrared lamps also reduce the bright glare to the eyes to an even higher extent than the ruby version, available in a range of lengths from 78 – 550mm, wattage's and voltages to suit your needs. These heat lamps are chosen when a more discrete light is required in public areas.

LENGTH	WATTAGE	VOLTAGE	END TYPE	PART NO.
348mm	1500W	230V	R7S	GIR-1.5KW-348-R7S-7960246

Catering Lamps 118-R7S Heated Jacketed Infrared



Catering Lamps 118-R7S Heated Jacketed Infrared

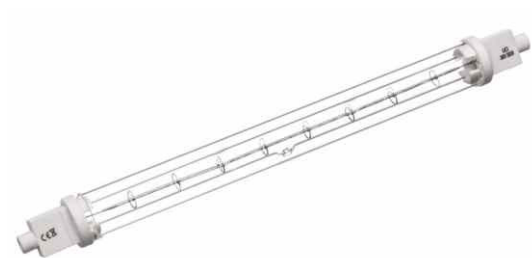
Catering Lamps 118-R7S Jacketed Infrared Quartz Heated food-safe catering heat lamps 118 mm, R7S ends.

WATTAGE **100w** **150w** **200w** **300w** **500w**

Catering Lamps 118-R7S Jacketed Infrared Quartz Heated has been specifically designed for the catering industry and is used in heated serving counters

LENGTH	VOLTAGE	WATTAGE	END TYPE	PART NO.
118mm	230V	100W	R7S	JIR-100W-118-R7S
118mm	230V	150W	R7S	JIR-150W-118-R7S
118mm	230V	200W	R7S	JIR-100W-118-R7S-7960079
118mm	230V	300W	R7S	JIR-100W-118-R7S-79600788
118mm	230V	500W	R7S	JIR-100W-118-R7S-7960081

Catering Lamps 220-R7S Heated Jacketed Infrared



Catering Lamps 220-R7S Heated Jacketed Infrared

Catering Lamps 220-R7S Jacketed Infrared Quartz Heated, for food display heated counters.

WATTAGE **300w** **500w**

Catering Lamps 220-R7S Jacketed Infrared Quartz Heated has been specifically designed for the catering industry and is used in heated counters and serveries.

Catering Lamps 220-R7S Jacketed Infrared Quartz Heated

LENGTH	VOLTAGE	WATTAGE	END TYPE	PART NO.
220mm	230V	300W	R7S	JIR-300W-220-R7S
220mm	230V	500W	R7S	JIR-500W-220-R7S

Catering Lamp 216/225-SK15



Catering Lamp 216/225-SK15

Lincat LA12 catering food lamp 216/225-SK15 wired ends are jacketed and used for food display heated counters.

WATTAGE **300w** **500w**

Lincat LA12 catering food lamp 216/225-SK15 supplied by U.C.I has been specifically designed for the catering industry and are used in heated counters and serveries. The 300w is called the LA11 and the 500w the LA12.

LENGTH	VOLTAGE	WATTAGE	END TYPE	PART NO.
216mm	230V	300W	SK15	JIR-300W-216-SK15-7960091
216mm	230V	500W	SK15	JIR-500W-216-SK15-7960104
225mm	230V	300W	SK15	JIR-300W-225-SK15
225mm	230V	500W	SK15	JIR-500W-225-SK15

Jacketed Clear infrared Lamp 350-SK15



Jacketed Clear infrared Lamp 350 SK15

The jacketed clear infrared lamp 350 SK15 is the longest clear infrared lamp that we stock, they are used in catering and process applications where lamp protection is required.

WATTAGE **1000w** **1500w**

The jacketed clear infrared lamp 350 SK15 is the longest clear infrared lamp that we stock, they are used in catering and process applications where lamp protection is required. The outer jacket protects the lamp from splashes and foreign bodies that would shorten the life of the lamp. They have SK15 ends with approx 300mm leads for fitting.

LENGTH	WATTAGE	VOLTAGE	END TYPE	PART NO.
350mm	1000W	230V	SK15	JIR-1KW-350-SK15
350mm	1500W	230V	SK15	JIR-1.5KW-350-SK15

Ruby Jacketed Infrared Lamps 118-R7S



Ruby Jacketed Infrared Lamps 118-R7S

Infrared ruby jacketed lamp 118mm OAL, 60mm heated R7S 240V

WATTAGE 300w 500w

Ruby jacketed infrared lamps have the same purpose as the ruby slim but with the added feature of a secondary tube which gives the lamp tube inside protection against foreign bodies that may damage the lamp by attaching its self to the lamp tube causing a blackening effect that would otherwise cause the lamp to fail prematurely. The lamp also has more protected against knocks that would normally break the lamp. It also reduces the glare that comes from the lamp.

LENGTH	WATTAGE	VOLTAGE	END TYPE	PART NO.
118mm	300W	230V	R7S	J-RIR-300W-118-R7S
118mm	500W	230V	R7S	J-RIR-500W-118-R7S

Ruby Jacketed Infrared Lamps 350-SK15



Ruby Jacketed Infrared Lamps 350-SK15

Infrared ruby jacketed lamp, 350mm OAL, 280mm heated SK15 500mm leads.

WATTAGE 1000w 1500w 2000w

These ruby jacketed lamps are 350mm long and have SK15 ends with leads, they have an overall heating zone of 280mm. The jacketed lamps offer additional protection and reduction of glare. A l t i s offers a longer life compared to the ruby un-jacketed types. Replacement for the Dimplex QXD3000, QX8900, HH451, 13123Z/876.

LENGTH	WATTAGE	VOLTAGE	END TYPE	PART NO.
350mm	1000W	230V	SK15	J-RIR-1KW-350-SK15
350mm	1500W	230V	SK15	J-RIR-1.5KW-350-SK15-7960202
350mm	1500W	110V	SK15	J-RIR-1.5KW-110-350-SK15-7960211
350mm	2000W	230V	SK15	J-RIR-2KW-350-SK15-7960209

Ruby Jacketed Infrared Lamps 348-R7S



Ruby Jacketed Infrared Lamps 348-R7S

Infrared ruby jacketed lamp, 348mm OAL, 280mm heated R7S push-in ends.

WATTAGE **1000w** **1500w**

These ruby jacketed lamps are 348mm long and have R7S ends, they have an overall heating zone of 280mm. The jacketed lamps offer additional protection and reduction of glare. All this offers a longer life compared to the ruby un-jacketed types.

LENGTH	WATTAGE	VOLTAGE	END TYPE	PART NO.
348mm	1000W	230V	R7S	J-RIR-1KW-348-R7S
348mm	1500W	230V	R7S	J-RIR-1.5KW-348-R7S-7960192

Ruby Jacketed Infrared Lamps 530-SK15



Ruby Jacketed Infrared Lamps 530-SK15

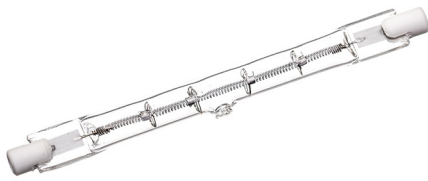
Infrared ruby jacketed lamp 1100w 530mm OAL, 460mm heated SK15 500mm leads 240v

WATTAGE **1100w**

The ruby jacketed 530mm lamps are supplied with the extra jacket for two reasons, one is to protect the lamp from foreign bodies that may attach themselves to the lamp causing hot spots which in turn cause premature failures. As well as it reduces any glare to a minimum.

LENGTH	WATTAGE	VOLTAGE	END TYPE	PART NO.
530mm	1100W	230V	SK15	J-RIR-1.1KW-530-SK15

Clear Infrared 118-R7S Catering Lamps



Clear Infrared 118-R7S Catering Lamps

Clear Infrared 118-R7S Catering Lamp, short wave, 118mm OAL, 60mm heated, R7S ends, clear tube, universal orientation.

WATTAGE 100w 150w 200w 300w 500w

Clear Infrared 118-R7S Catering Lamp, short wave, 118mm OAL, 60mm heated, R7S ends, clear tube, universal orientation.

LENGTH	WATTAGE	VOLTAGE	END TYPE	PART NO.
118mm	100W	230V	R7S	IR-100W-118-R7S-7960328
118mm	150W	230V	R7S	IR-150W-118-R7S-7960296
118mm	200W	230v	R7S	IR-200W-118-R7S-7960293
118mm	300W	230V	R7S	IR-200W-118-R7S-7960293
118mm	500W	230V	R7S	IR-500W-118-R7S-7960312

Infrared Heat Lamp Clear 254-R7S



Infrared Heat Lamp Clear 254-R7S

Infrared lamp, short wave 500W, 240v, 254mm OAL, R7s ends, universal orientation.

WATTAGE 500w

Infrared lamp, short wave 500W, 240v, 254mm OAL, R7s ends, universal orientation. Replaces Osram 13169RRAD

LENGTH	WATTAGE	VOLTAGE	END TYPE	PART NO.
254mm	500W	230V	R7S	IR-500w-254-R7S

Clear Infrared 216-SK15 Heat Lamp



Clear Infrared 216-SK15 Heat Lamp

Infra-red lamp, 240v, 216mm+/-2 long, 10mm dia, SK15 ceramic terminals with 250mm leads with crimped ends, short wave. Replaces IRL300B

WATTAGE **300w** **500w** **700w**

Clear Infrared 216-SK15 Heat Lamp, SK15 ceramic terminals with 250mm leads with crimped ends, short wave. Available in 3 wattages.

LENGTH	WATTAGE	VOLTAGE	END TYPE	PART NO.
216mm	300W	230V	SK15	IR-300W-216-SK15
216mm	500W	230V	SK15	IR-500W-216-SK15-7960331
216mm	700W	230v	SK15	IR-700W-216-SK15
216mm	500W	230V	SK15	IR-500W-216-SK15-REF-7960372

Clear Infrared 220-R7S Heat Lamp



Clear Infrared 220-R7S Heat Lamp

Infrared non-jacketed clear lamps, 500w, 240v, 220mm long, R7S ends.

WATTAGE **300w** **500w**

Clear Infrared 220-R7S Heat Lamp, R7S push-in ceramic terminals for easy fitment, short wave. Available in 2 wattages.

LENGTH	WATTAGE	VOLTAGE	END TYPE	PART NO.
220mm	300W	240V	R7S	IR-300W-220-R7S
220mm	500W	240V	R7S	IR-500W-220-R7S

Clear Infrared Lamps X-Strap ends



Clear Infrared Lamps X-Strap ends

Infrared lamp, short wave, heating length, X Strap ends, clear tube, universal burning positions.

WATTAGE **500w** **1000w** **2000w**

The Clear infrared lamps X-strap are available in several lengths and wattages. We supply them clear or with a reflector surface on one side. These lamps are primarily used in process applications and are of the short-wave spectrum.

LENGTH	WATTAGE	VOLTAGE	END TYPE	PART NO.
241mm	500W	230V	X-STRAP	IR-500W-241-X
370mm	1000W	230V	X-STRAP	IR-1KW-370-X
370mm	2000W	230v	X-STRAP	IR-2KW-370-X

Clear Infrared lamps 350-SK15



Clear Infrared lamps 350-SK15

Infrared lamp, short wave, 350mm OAL, 280mm heated, SK15 ends, clear tube, universal orientation.

WATTAGE **1000w** **1500w**

Infrared lamp, short wave, 350mm OAL, 280mm heated, SK15 ends, clear tube, universal orientation.

LENGTH	WATTAGE	VOLTAGE	END TYPE	PART NO.
350mm	1000W	230V	SK15	IR-1KW-350-SK15
350mm	1500W	230V	SK15	IR-1.5KW-350-SK15

Infrared Lamp Clear 530-SK15



Infrared Lamp Clear 530-SK15

Infrared lamp, short wave 1500W, 240v, 530mm OAL, SK15 ends, universal orientation.

WATTAGE 1500w

Infrared lamp, short wave 1500W, 240v, 530mm OAL, SK15 ends, universal orientation.

LENGTH	WATTAGE	VOLTAGE	END TYPE	PART NO.
530mm	1500W	230V	SK15	IR-1.5KW-530-SK15

Buffalo Infrared Heat Lamp ES



Buffalo Infrared Heat Lamp ES

Buffalo infrared heat lamp ES, R125 Infrared Bulbs E27 are used in heated food display units.

WATTAGE 100w 150w 200w 300w 500w

Buffalo infrared heat lamp ES R125 Infrared Bulbs E27 are used in heated food display units such as the Nisbits Buffalo units. They are available in clear and ruby options. They offer a 5000hr long life. These lamps can fit GD867, GC882 and GC883.

Buffalo Shatterproof Infrared Clear/Ruby Heat Lamp ES



Buffalo Shatterproof Infrared Clear/Ruby Heat Lamp ES

Buffalo 250W shatterproof infrared heat lamp ES, Clear or Ruby reflector infrared bulb, 125 dia, E27, hard glass, R40 Shape, shatterproof. Replacement for AE309.

WATTAGE 250w

Specification

General Information

Buffalo 250W shatterproof infrared heat lamp ES is used in heated food display units such as the Nisbits Buffalo units. Available in clear and ruby options, offer a 5000hr long life and are shatterproof for food safety. The Buffalo 250w lamp can fit and replace the AE307 and will include units GD867, GC880, GC882, GC883, GC887, GC888, DL492, DL493, DR573, CN316, DR574, DR575, DR576, DR577, DR578, and DR579. Non-dimmable.

Dimensions:160(H)x 130(W)x 130(D)mm.

Long life

Ideal for food warming and display

Easy to fit

Edison Screw ES/E27

Infrared

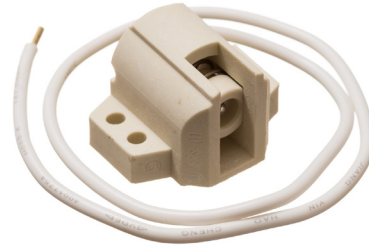
E27 Ceramic Lamp Holder

E27 Ceramic Lamp holder heat resistant bulb holder to suit E27 infrared food warming bulbs.



R7S Ceramic lamp holder R7S-806AT

6A 1500w, 600V, 200 deg C, R7S ceramic spring connector, 500mm leads.



Birchwood Rhino TQ3 R7s end Lamp fittings 2 pack

Birchwood Rhino TQ3 RHN-TQ3-13 R7s Lamp fitting. Sold as a pair



R7S Alloy lamp holder R7S-804AT (pair)

6A 1500w, 600V, 200 deg C, R7S ceramic spring connector, 500mm leads.



R7S Alloy lamp holder R7S-YF-181C (pair)

R7S spring connector, alloy, 250v, 6A, 250 deg C rated, 250mm leads. Suits Birchwood Rhino TQ3 and similar.



Lamp Holder-118-R7S

Lamp Holder-118 R7S Ceramic, R7S, lamp holder 118mm bracket, 500v, 6A, FG leads.



THANK YOU!

Thank you for considering our products, please call us should you need any other specific requirements. Our product range is always expanding and it may be a non-standard part that we also stock.

Please visit our website where you can find other items of interest.



GET IN TOUCH



0044 (0)121 2382795



sales@undercontrol.co.uk



undercontrol.co.uk



Under Control Instruments Ltd

Unit 2, 662 Holly Park Industrial Estate

Holly Lane, Erdington, Birmingham

B24 9PD, United Kingdom