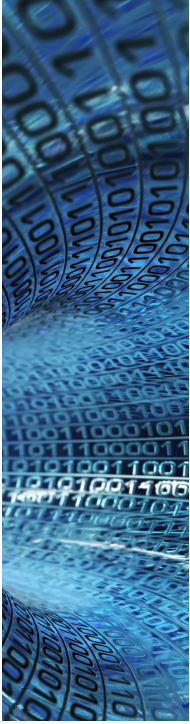


# CLEAR-INFRARED LAMPS



## Jacketed-Infrared IR-Lamps

### APPLICATIONS

Clear infrared lamps are used for heating and are used in many process heating applications that require instant shortwave drying. Other applications are heated counters in restaurants and canteens.

They can be supplied in a range of lengths from 78 - 788mm. These lamps are simple, effective, reliable, and economical to run.

The most common lengths and wattages are listed below, please call us should you require a different length.

The lamps are dimmer-able so can be temperature controlled via a power regulator.

### CONSTRUCTION

Manufactured from quartz 10mm diameter, they convert virtually all the electrical power into heat, hardly any energy is wasted.

They can be switched on/off instantly so heat is given instantly.

### INSTALLATION

These lamps are suitable for universal orientations so will suit most installation positions. Even though they are easy to install and replace, care must be taken not to touch the tube with bare hands and that the ends sit correctly in the holder.

OAL	Colour	wattage	voltage	End Style	Part Number
118mm	Clear	100	230	R7S (push in)	IR-100W-118-R7S
118mm	Clear	150	230	R7S (push in)	IR-150W-118-R7S
118mm	Clear	200	230	R7S (push in)	IR-200W-118-R7S
118mm	Clear	300	230	R7S (push in)	IR-300W-118-R7S
118mm	Clear	500	230	R7S (push in)	IR-500W-118-R7S
216mm	Clear	500	230	SK15 (wired)	IR-500W-216-SK15
216mm	Clear	700	230	SK15 (wired)	IR-700W-216-SK15
216mm	REF	500	230	SK15 (wired)	IR-500W-216-SK15-REF
241mm	Clear	500	230	X-STRAP	IR-500W-241-X
254mm	Clear	500	230	R7S (push in)	IR-500W-254-R7S
254mm	REF	500	230	R7S (push in)	IR-500W-254-R7S-REF
254mm	Clear	1000	230	R7S (push in)	IR-1KW-254-R7S
350mm	Clear	1000	230	SK15 (wired)	IR-1KW-350-SK15
350mm	Clear	1500	230	SK15 (wired)	IR-1.5KW-350-SK15
370mm	Clear	1000	230	X-STRAP	IR-1KW-370-X
370mm	REF	1000	230	X-STRAP	IR-1KW-370-X-REF
370mm	Clear	2000	230	X-STRAP	IR-2KW-370-X